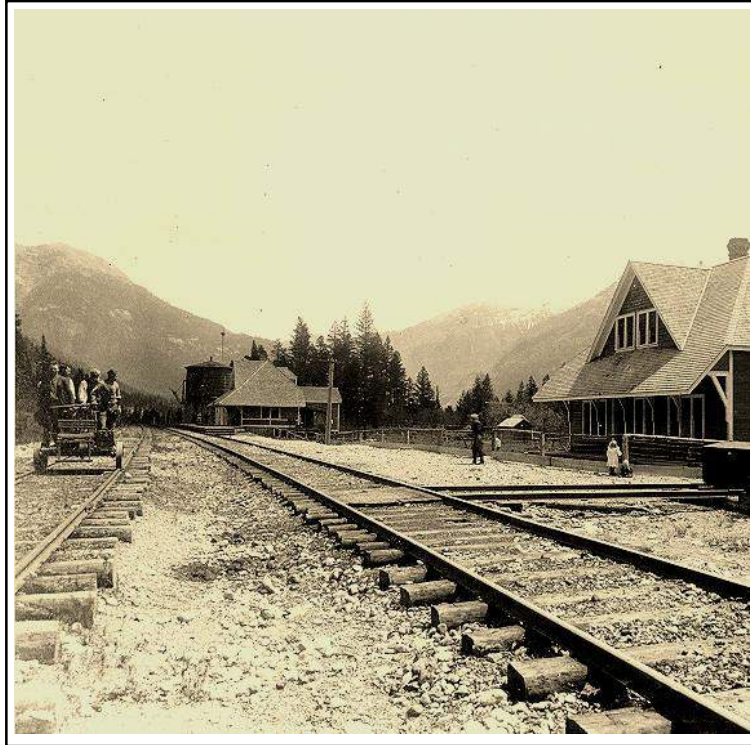


# Elko Station

Van Horne Street



This small station dates back to 1901 and was moved to the former Museum site from Elko (70 kilometres east of Cranbrook) in July 1987.

It is the only surviving Crowsnest Style “B” depot of the CPR, and is noted for its steeply pitched and well-proportioned roof with large front dormer. It was used continually by the railway until 1985, when its use was discontinued and set for demolition. The railway then offered it to the museum.

The building served from 1988 to 2002 as the visitor reception centre for museum, with gift shop, ticket sales, public washrooms. The historic archives and reference library, with a specialty collection on railway travel, was also contained on the upper floor. It also included additional executive offices, and a large Board Room.

Since the Museum’s relocation in 2002 the Elko Station was, for a time, rented out as office space at fair market value. The building presently lies empty as it awaits restoration following a small fire in July 2013.

Prior to the fire the conservator reviewed this building and found it to be in good condition with only a few signs of weathering and impact by animals.

Given Heritage Designation November 2013